



# GRAND D600

The joy is in the journey

# GRAND D600





# DESIGNED FOR THE ADVENTURE LOVERS

The perfect blend of thrill and leisure, the Grand D600 is a stable and performance-orientated boat, inspired by the love of speed and dynamics. With a deep V hull and raised tubes that rest above the surface and minimise water resistance, this boat has a distinctive style and offers unmatched practicality. An open deck layout with ample space and eight deep storage lockers, the D600 brings versatility to your active, cruising trips on the water. Whether fishing, wakeboarding, diving, or spending time with family, the D600 creates room for whatever form your adventure takes.



GRAND D600

# DRIVE YOUR ADVENTURE



# GRAND D600

## SPECIFICATION

Overall Length	612 cm
Internal Length	440 cm
Overall Width	250 cm
Internal Width	154 cm
Tube Chambers	5
Engine Max	150 HP
Recommended Engine	150 HP
Passenger Capacity	10
Fuel Tank	141 L
Water Tank	50 L
Bare Boat Weight	597 kg
Total Package Weight	1085 kg
Midsection/Aft Deadrise	22°/22°
Tube Material	Hypalon
Hull	Fibreglass
Upholstery	Silvertex
Flooring	SeaDek

## STANDARD FEATURES

Deep V Hull  
 Inflatable Hypalon Tubes  
 Keel & Tube Protection  
 Bow Step Plate with Mooring Cleat  
 Two Large Bow Lockers  
 Under Deck Bow Storage  
 Front Console Seat with Storage  
 Fibreglass Steering Console  
 Hydraulic Steering with Sport Steering Wheel  
 Electrical Package (NAV Lights, Battery Switch, Bilge Pump & Console Switches)

Moulded Rear Seat with Storage Lockers  
 Ski Tower  
 Rear Large Storage Lockers  
 Large Swimming Platforms with Ladder  
 Integrated Bow & Stern Lifting Eyes  
 SeaDek Foam Flooring  
 Silvertex Premium Upholstery  
 Overall Cover & Harbour Cover  
 Powder Coated Stainless Steel  
 141L Under Floor Fuel Tank

## RECOMMENDED ELECTRONICS

Garmin GPSMAP 953xsv Chart Plotter  
 Fusion RA670 Stereo  
 4x Fusion XS 6.5" Speakers  
 Garmin 215i VHF  
 Scanstrut Rokk Wireless Active Phone Charger

## OPTIONAL ACCESSORIES

Bow Sundeck Kit  
 Stern Sundeck Kit (Lux Only)  
 Jockey Helm Seat or Wide Bench Seat  
 Fabric T-Top  
 Bow & Stern Canvas Sun Shade  
 Shower Kit with Water Tank  
 Scanstrut Atmos 12v Inflator



GRAND D600



# CHOOSE YOUR ADVENTURE



## ACTIVE

A configuration that excels in rougher conditions, with jockey seats at the helm and a maximised deck layout for those who enjoy offshore, active boating adventures.

### KEY FEATURES

Sports jockey seat at the helm, with bolster seat that can switch between leaning and sitting

Maximised deck space at the stern, thanks to minimal helm seating design



## LUX

A configuration for those who seek a fusion of functionality and leisure, offering both a spacious deck space and comfortable bench seating and extendible sun beds for family relaxing.

### KEY FEATURES

Pivoting helm bench seat, creating an open entertaining space at the stern

Stern sundeck kit with optional extension for a large sun bed area.



## DRIVE

A configuration primarily used commercially, utilised across sightseeing, fishing, diving, water taxi-ing services.

### KEY FEATURES

Single helm jockey seat, with bolster seat that can switch between leaning and sitting.

Five sports passenger jockey seats with storage underneath.

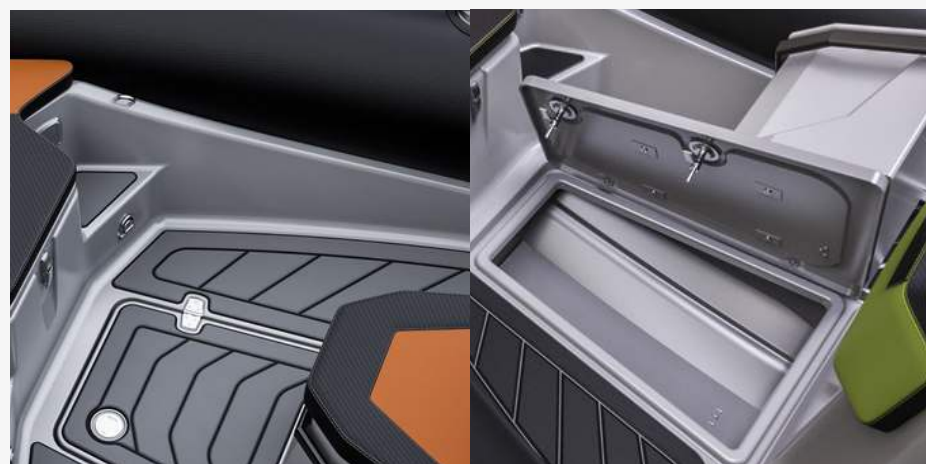




## THE BOW

The bow area of the D600 is as comfortable as it is functional. A large step plate - fitted with an anchor roller and two mooring cleats - provides a stable platform to access or leave the boat from moorings, pontoons or beach landings. The bow seat houses two storage compartments underneath - one for your anchor, and a second larger locker for storing away toys and bags. The deck between the bow lockers and the front console seat also opens up, and houses a deep and long storage locker that has been built into the hull for optimum space and practicality.

At the bow, the optional sundeck extension cushions join the bow seat and front console set to create one expansive sunbed area for relaxing.





GRAND D600



# THE CONSOLE

The ergonomic console is space-effective and well-positioned, fitted with two cupholders, a large dashboard, windscreen and grab handles all-around. Capable of housing up to a 12" chart plotter, the dashboard is typically finished with electronics such as a Scanstrut Wireless Phone Charger, Fusion Stereo, Garmin VHF and more.

The front seat on the other side of the console has a backrest and grab handle, and opens up both above and below the deck to offer two generous storage compartments.







# HELM SEAT

The D600 offers two choices of helm seats; a wide, rotating bench seat or two sports jockey seats. The jockey seats are found on the Active and Drive configurations, and are good for offshore, active boating, providing good support and impact-absorption. The seats bolster seats rotate, enabling driver and passenger to flip the seat from leaning to sitting.

The bench seat is found on our Lux configuration. This wide helm enables the driver to sit behind the console, but also rotates backwards, creating a lean-to for the driver whilst offering an outward-facing bench seat that looks towards the stern bench seat.



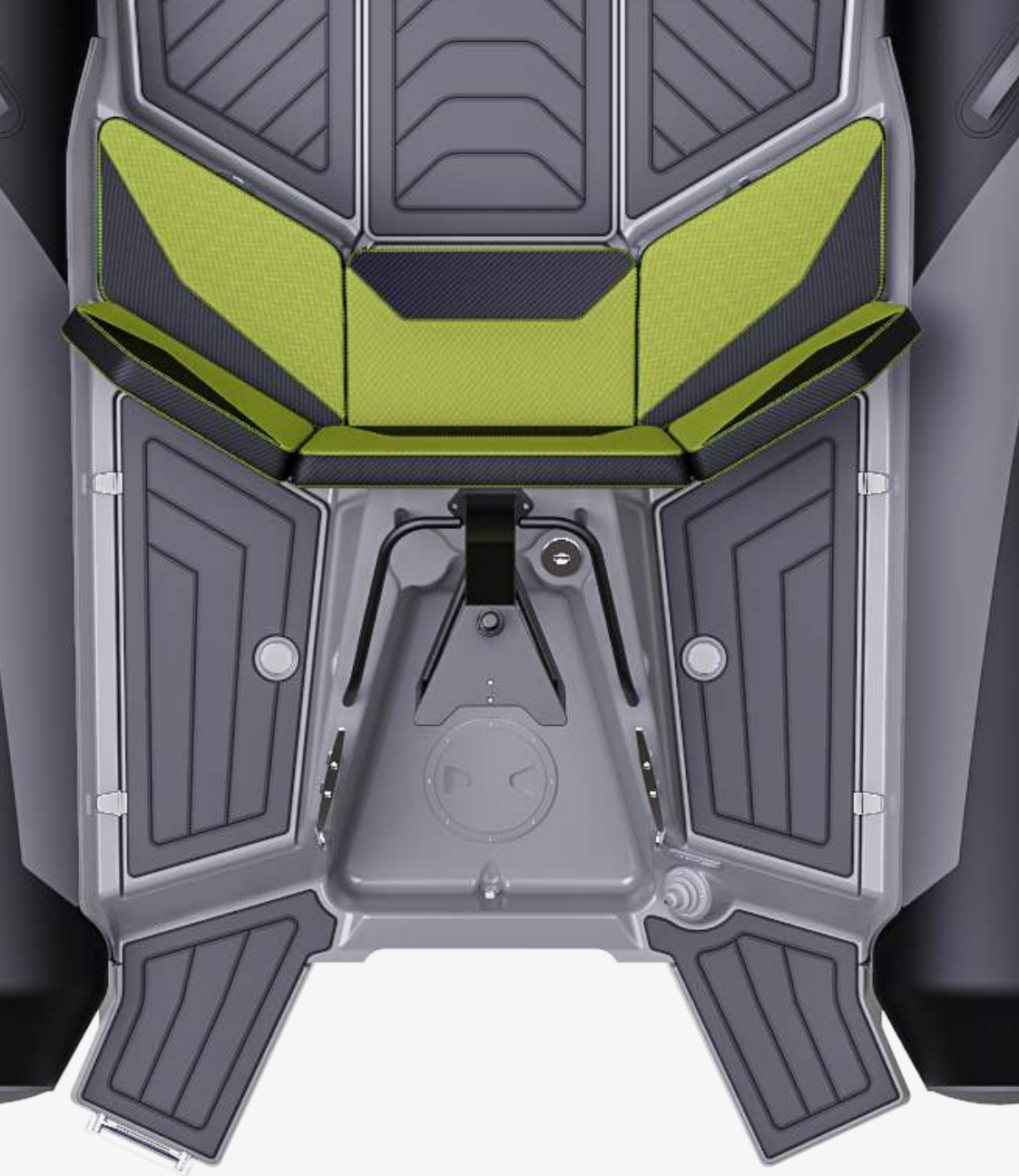
# THE STERN

At the stern, a moulded rear sofa comfortably seats 2 - 3 passengers. Two storage lockers can be found under each side of the bench, while the middle seat is entirely removable, offering an additional storage space on deck.

The backrests on the left and right of the bench are removable, housed in rod holders. Removing these not only creates open passage to the rear platforms, but when combined with the sundeck extension kit, creates a large sunbed area.



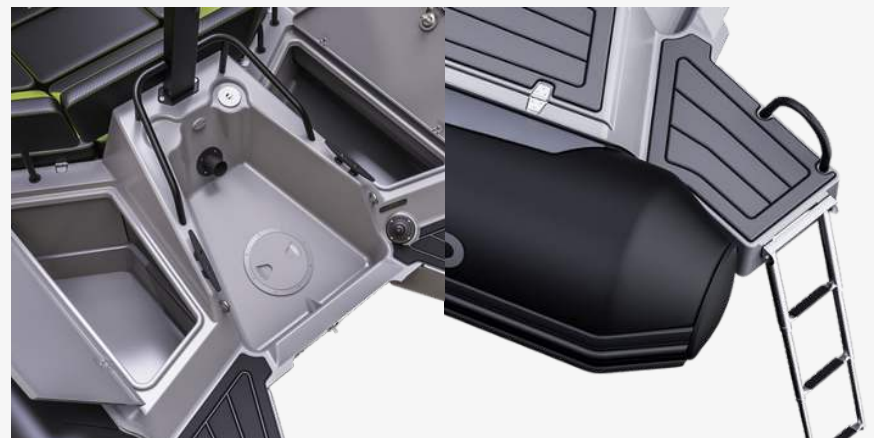




## REAR SECTION

Functional space is maximised at the rear of the Grand D600. Two large swim platforms on each side offer wide, stable platforms that support a number of activities, whether it's a platform for fishing, or for getting kitted up for wakeboarding or diving. Underneath the platforms, two deep storage compartments offer further storage space, perfect for packing away gear and equipment.

The swim platforms also feature a telescopic boarding ladder and handrails which make getting in and out of the water easy. A shower can also be fitted to this aft deck, creating a great wash down area after all your activities.



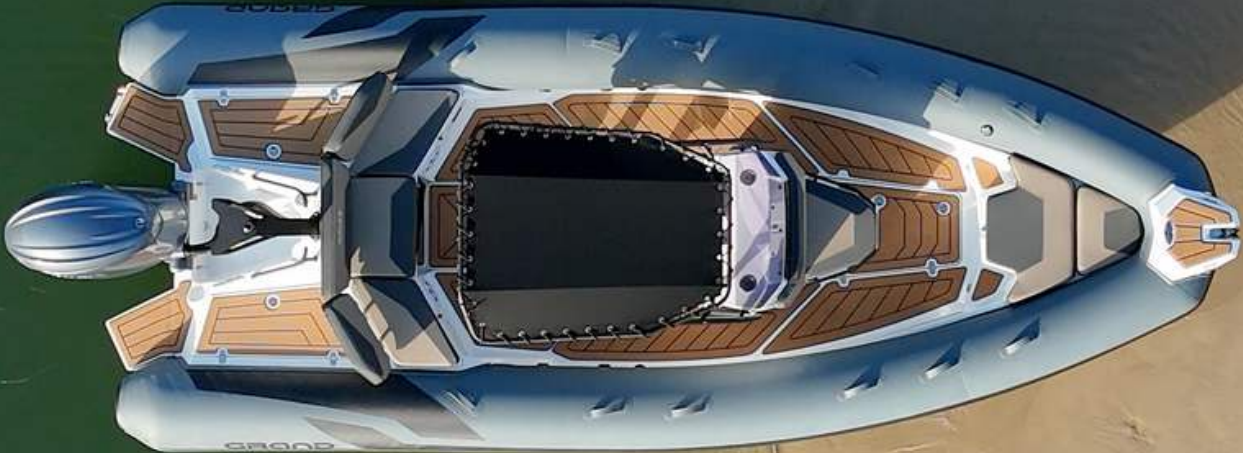
# SUN SHADE

The fabric t-top fitted on all configurations of the D600 provides effective sun protection to the driver and passenger at the helm. The t-top also provides great storage capacity, with railings all-round and underneath making it a great space to stow rods, rack wakeboards, or fit rocket launchers.

The optional sunshade extensions can also be fitted to provide shade to the bow and stern areas. These shades attach onto the t-top and tightly stretch out to create a sturdy and effective shade solution.







The background of the entire image is a repeating pattern of the Grand logo. The logo consists of a stylized, bold letter 'G' with a small arrow pointing upwards and to the right, all contained within an oval border. The pattern is light gray and covers the entire background.

# GRAND D600

E: [info@grandboats.com.au](mailto:info@grandboats.com.au)  
W: [www.grandboats.com.au](http://www.grandboats.com.au)